

# Reflecta Lite



*Reflecta Lite is a freestanding double sided light box. Elegant looks and ease of assembly make the Reflecta Lite ideal for retail or display applications.*

## features & benefits

- Internally illuminated light box
- Double sided
- Freestanding
- Simple to assemble and change graphics
- Stable oversize base
- Packs flat for transit and storage
- Available in silver

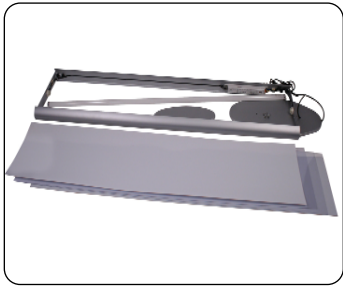
## technical information

- 58w Fluorescent daylight tube
- 2 metre approx. external flexible cable & plug
- Recommended graphic material: 200 micron Duratrans or equivalent
- Suitable for indoor use only

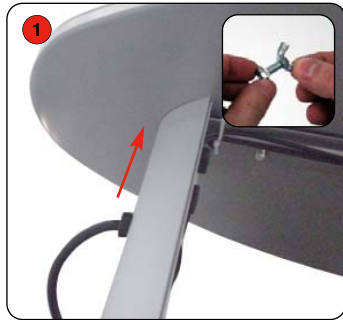


hardware specifications	graphic specifications	additional info
<p>Assembled Dimensions (mm): 1565 (h) x 565 (w) x 280 (d) approx.</p> <p>Weight: 9kg approx.</p> <p><i>Weight does not include graphics or transit packaging.</i></p>	<p>Graphic Dimensions (mm): 1540 (h) x 334 (w) approx.</p> <p>Visible Graphic Dimensions (mm): 1530 (h) x 318 (w) approx.</p> <p>Recommended graphic material: 200 micron Duratrans or equivalent.</p>	<p>Availability: Silver Carry bag is not included</p>

# Assembly Instructions



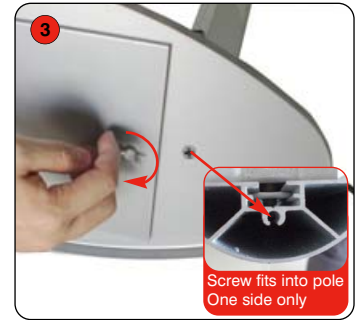
Kit includes: Base, bolt & wing nut x2, light box frame, fluorescent tube, white backing sheets x2, clear sheets x2 & lid.



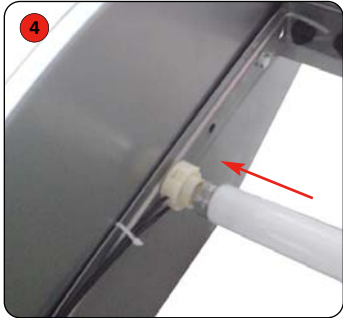
1 Undo the bolt and wing nut. Offer up the light box frame to the base.



2 Feed the bolt through the hole in the frame and through the corresponding hole in the base.



3 Fasten the bolt and wing nut to secure the base to the light box frame. Repeat steps 1 to 3 for the 2nd bolt and wing nut.



4 Locate the fluorescent tube terminals into the connector cups attached to the frame.



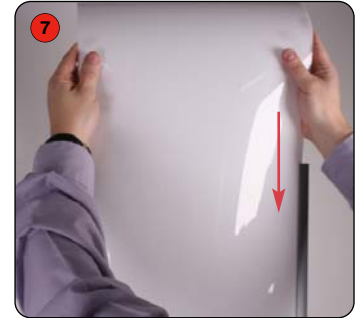
5 Twist tube 90° into the connector cup at the top of the frame and locate the fluorescent tube terminals into the cup.



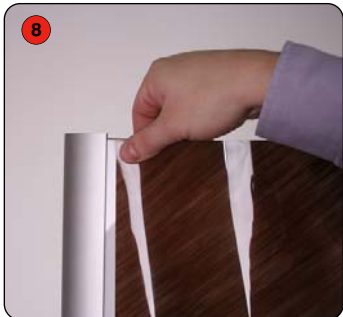
6 Fluorescent tube located into the light box frame.

**Do not switch on power until the fluorescent tube is correctly seated into the light box frame.**

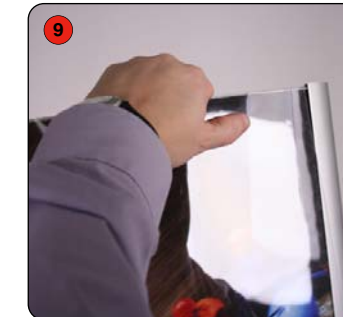
**NB for future tube replacement please follow assembly steps 10 through to 4 in reverse.**



7 Slide the white backing sheet into the channels in the light box frame.



8 Place the graphic image over the white backing sheet.



9 Slide the clear protective sheet over the graphic image. Repeat steps 7 to 9 for the reverse side.



10 Fit the lid over the top of the light box frame to complete assembly.

**Important note: If the external flexible cable is damaged it shall be exclusively replaced by the manufacturer or his service agent or similar qualified person.**

Other products in our Reflecta range include:



## Reflecta D

A high impact light box display solution, just add your own graphics. Spring loaded mechanism for easy change of graphics. Wall fixing, portrait or landscape



## Reflecta Pod

A range of graphics pods and light boxes, perfect for demonstration units or for instore displays and exhibitions.



## Reflecta Pro

An unusual and subtle way of creating an eye catching display. The Reflecta Pro light box provides you with a simple and cost effective solution.